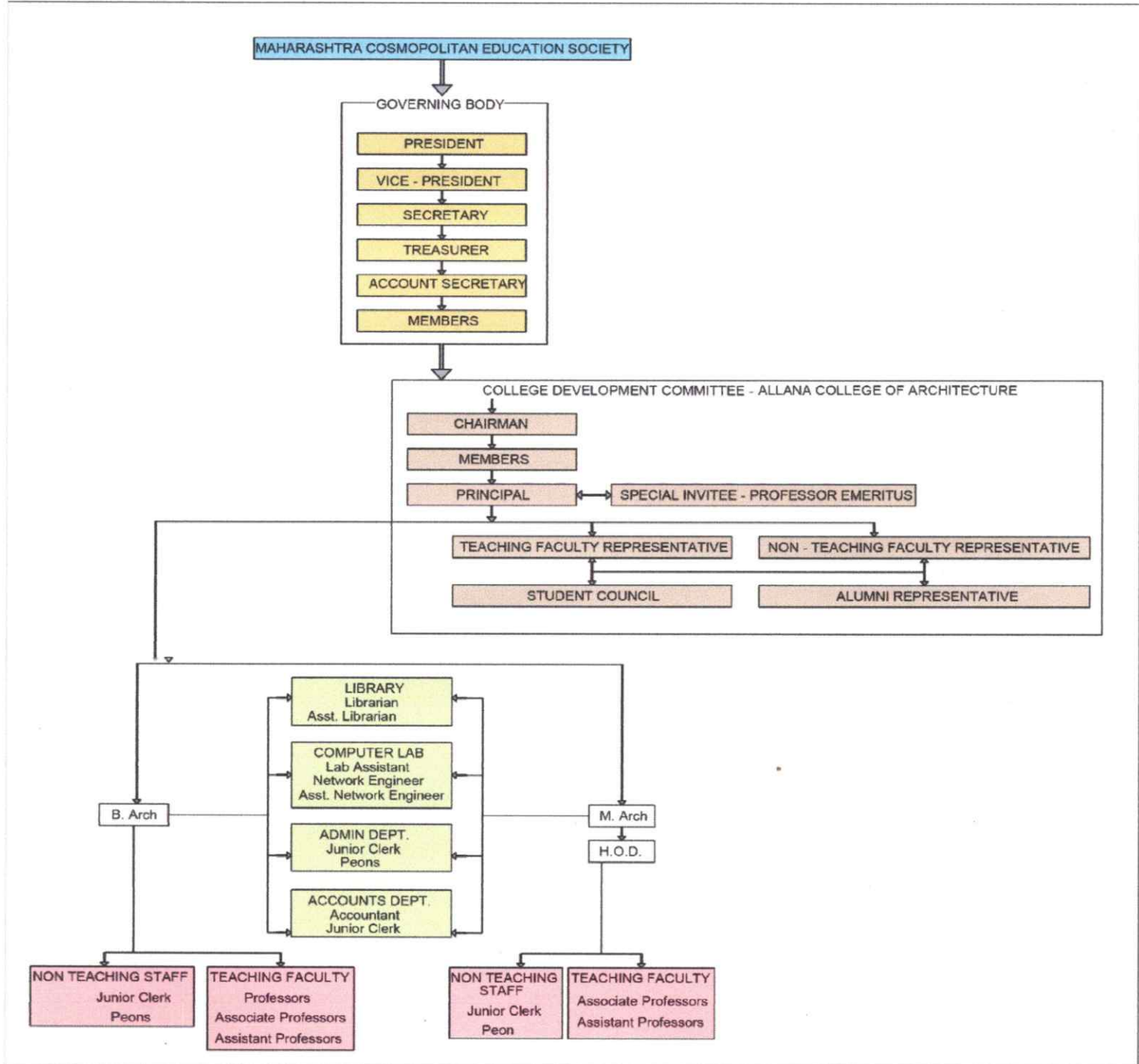




M. C. E. Society's
ALLANA COLLEGE OF ARCHITECTURE

(Approved by Council of Architecture - New Delhi, AICTE & Govt. of Maharashtra)
 (Affiliated to Savitribai Phule Pune University)

2390 - B, K. B. Hidayatullah Road, Azam Campus, Camp, Pune 411 001.
 Tele Fax : 020 - 26433202, E-mail : info@allanaarchitecture.org, Website : www.allanaarchitecture.org
 I.D. No. PU / PN / Arch./ 142/1999. * AISHE CODE : C - 42163



Linasebnad
 Principal
 Allana College of Architecture
 Azam Campus, Camp, Pune-411 001